

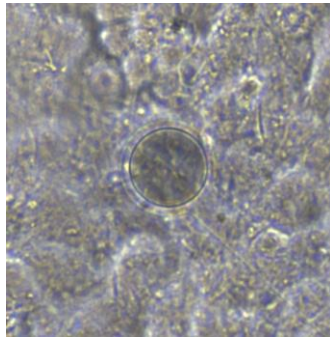
IntraCell

laser cell poration system for cardiac electrophysiology on
microelectrode arrays (MEA)

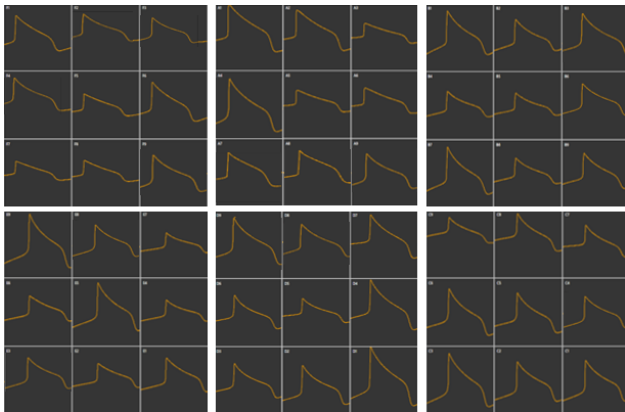


- **Acute and short-term cardiotoxicity**
 - Action Potential (AP) recordings every 1-2 hours
- **Chronic cardiotoxicity for more than 1 month**
 - AP recordings every 1-2 days
- **Development of new cellular models**
 - Follow functional maturation of new cell models by AP recordings on MEA
- **Acquire video of contracting cells**
 - Correlate contractility with APs
- **Heart disorders**
 - AP recordings from patient-derived cardiac cells

Aug 2022



- Optical imaging
- Automated image acquisition from all electrodes
- Video recording
- Auto-alignment on electrodes
- Autofocusing
- Automated laser scan



- Action Potential recordings from all cells
- HERG block
- Repolarization effects
- Rise-time changes
- Arrhythmia detection
- Conduction velocity
- Propagation pattern



- Compatible with MEA systems from Multi Channel Systems MCS GmbH
- 60, 120, 256 electrodes systems



- Compatible with:
 - Single-well MEA 60, 120, 256 electrodes
 - 6-well MEA 60, 256 electrodes
 - 9-well MEA 256 electrodes

Aug 2022